

Immobilization, Stop, Park

✓ Stopping

- Voluntarily
- Less than 2 Mins
- Stay in or with the car



Detention ✓

- Voluntarily
- Less than 2 Mins
- Stay in or with the car

✓ Parking

- Voluntarily
- More than 2 Mins
- Driver leaves the vehicle
- Even if the less than 2 mins



Detention/ Arrest ✓

- Unvoluntarily
- Traffic Jams
- Break-down



Shahid Raja

Stopping / Parking

✓ Motorway

- Designated Places
- Services/ Rest Areas
- Emergencies – Stop on Shoulder

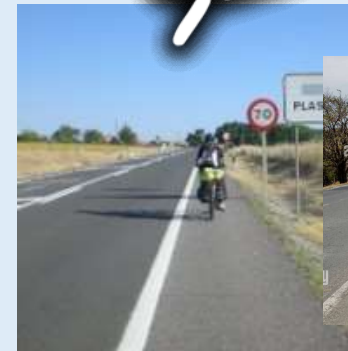


✓ Conventional Roads (Expressway)

- Designated Places
- Services/ Rest Areas

✓ Conventional Roads

- Stop/ Park off the Road
- Also on Shoulder if passable
- Always on the RIGHT
- Even if the less than 2 mins



Shahid Raja

Stopping / Parking

✓ Urban / Cross Town

- Where no sign prohibiting
- Two Way - Right Side
- One Way – Right or Left Side



Shahid Raja

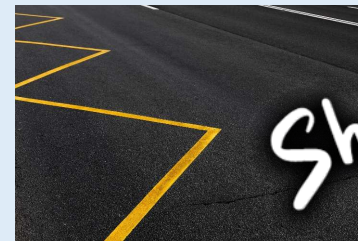
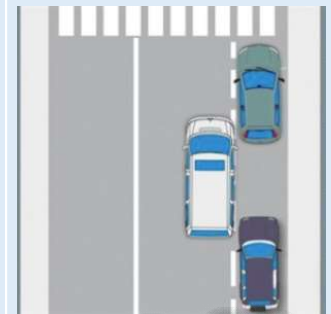
Stopping / Parking Prohibited

NO Stopping/ Parking

- **Intersections** - BUT Yes if **10 meter** Distance
- **Bus Lane/ Bus Stop/ Bike Lane**
- **Disabled Badge Area**
- **Double Parked** – BUT can stop leaving more than 1 meter passable
- **Median or Central Reservation** – BUT Yes, if no alternative

NO Parking: Limited Zone without TICKET

- Front of Garage, Designated Area
- Double Row
- Loading, Unloading , Continuous Yellow Line



Maneuvers

A maneuver is a notable variation in the moving vehicle such as:

✓ Changing direction

Right, Left, U-Turn (Blind Spots)



✓ Turning (including U-turns)

- Never Endanger Others
- Designated Place / Clear Visibility



✓ Stopping and parking

We have discussed above

Merging ✓

Yield Others

Changing lanes ✓

Yield Others/ They facilitate

Overtaking ✓

Back to Right Lane/ Don't Hinder

Shahid Raja

Safety Rule - MSM

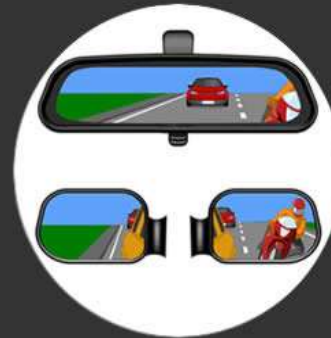
Mirror – Signal - Maneuver

Espejos (Mirrors) -Señalizar (Signal) - Maniobrar (Manoeuvre)

✓ MIRROR
Espejos

✓ SIGNAL
Señalizar

✓ MANEUVER
Maniobrar



M S M

Shahid Raja



Acoustic Signal - HORN

Use outside of a built-up area

- ✓ On narrow roads with many dangerous bends.
- ✓ To alert the driver in front that you are going to overtake.

Use in and out of a built-up area

- ✓ To avoid a possible accident
- ✓ To warn that you are driving in case of a medical emergency

Shahid Raja



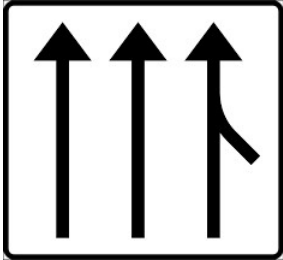
Arm Signals

Use outside of a built-up area

- ✓ First Choice Light Signal
- ✓ Reinforce / when Malfunction
- ✓ Arm Signal take Precedence



Shahid Raja



Merging Traffic

Acceleration Lane

Drive at a speed that allows you to stop (Give Way)

- ✓ You Give Way
- ✓ Others Vehicle Right of Way
- ✓ They should facilitate



Shahid Raja



Overtaking

General Rule (Overtake on left Side)

Overtake on RIGHT Side;

- ✓ When a Vehicle Turns Left
(In and Outside Built Up Area)



Overtake on RIGHT Side (Built Up Area)

- ✓ Two or more lanes, Marked
- ✓ Trams in the center



Shahid Raja



Overtaking – Lateral Space

Built-Up Area

- ✓ Proportional to the speed and the width of the road.

Outside Built-Up Area

- ✓ Proportional to the speed and the width of the road.
- ✓ **1.5 meters** for pedestrians, animals, or 2-wheel vehicles (bicycles, mopeds, etc.)

Outside Built-Up Area

Motorcycle Overtaking a vehicle must leave **1.5m**



Shahid Raja



Obligation – Being Overtaken

If NO accident risk

- ✓ Don't Increase/ Decrease Speed
- ✓ Near the R Edge/ Not on shoulder



If Risk of Accident

- ✓ Increase/ Decrease Speed
- ✓ **Last Resort:** To Shoulder
- ✗ Over 3500 kg – **Not on Shoulder**



Shahid Raja



Warn Overtaking

Vehicle behind

- ✓ Turn Signal Or Arm
- ✓ Well in Advance



Vehicle in front

- ✓ Built-up Area -Short Flashing Lights
- ✓ **Outside** Built-up Area – Flashing Lights and HORN (Inter-Urban)





Overtaking Forbidden

...

- ✗ Places with reduced visibility, When invading Opposite Direction
- ✗ Level Crossing and vicinity BUT can overtake 2 Wheel Vehicle
- ✗ Tunnels / Underpass with one Lane
- ✗ Pedestrian Crossing and vicinity BUT can overtake;
 - ✓ 2 Wheels Vehicle
 - ✓ Any Vehicle with Speed you can stop

...

- ✗ At Intersections

BUT You can Overtake

- ✓ If you have right of way.
- ✓ If No Right of Way, Way is clear and Vehicle in front is 2-Wheels
- ✓ in a Roundabout

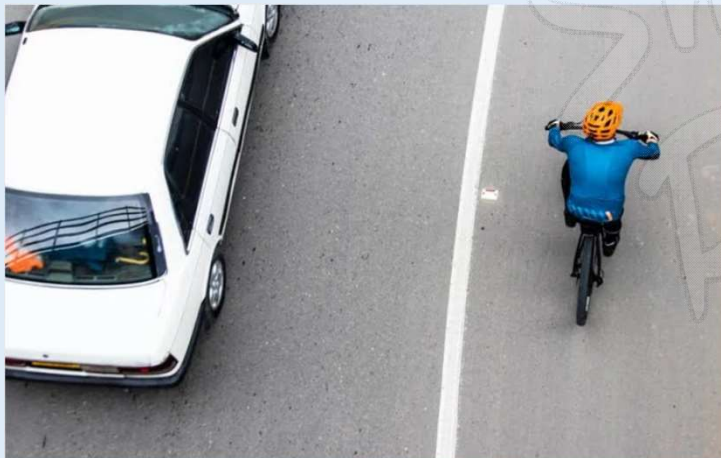
Shahid Raja



Cross Solid Line – Enter Adjacent Lane

Enter Adjacent Lane completely or partially

- ✓ Animals, Pedestrians, Cyclists
- ✓ Reduced Mobility vehicles
- ✓ Moped, Animal Drawn V.

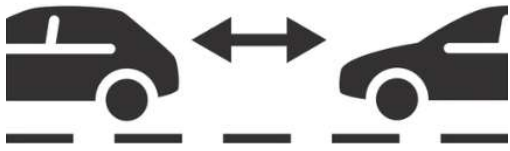


✗ Not Considered Overtaking

One Vehicle goes faster than other in case of;

- ✓ Traffic Jams
- ✓ Acceleration/ Dec. Lanes
- ✓ Bus / Cycle Lane
- ✓ Cyclists pass one another within a group

Shahid Raja



Safety Distance

3 Types

You should keep safe distance;

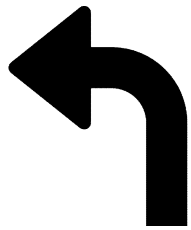
- ✓ In Front, Not Collide in Emergency Braking
- ✓ In Front, Not Collide, and allow behind to overtake safely.
- ✓ V, over 10m long, keep 50m

Speed doubled = Safety Distance 4 Times

.....

- ✓ **100 Meters in Tunnels, Less than 3500 kg**
- ✓ **Same for Over 3500**





Turning Left

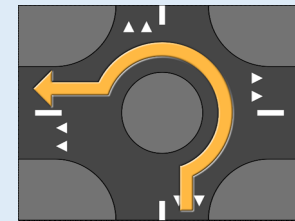
- ✓ **One Lane, Two Way:** Stay Centered
- ✗ Don't Enter Opposite Side
- ✓ **3 Lanes, 2 Way:** Go to Middle Lane



- ✓ **One Way Streets:** Keep Left



- ✓ **Roundabouts:** Go Around

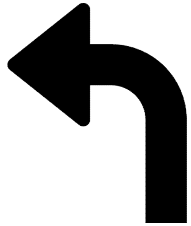


- ✓ **Cycle/ Moped:** Turn from Shoulder (Inter-Urban)



- ✓ **No Left turn, No Vis. Left Turn**

Shahid Raja

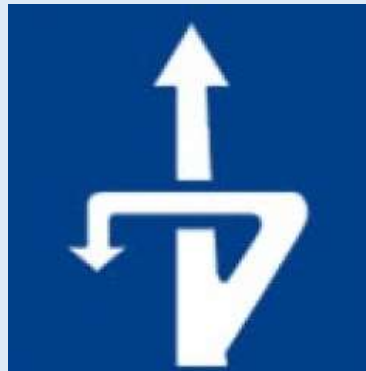


Changing Direction – U-Turn

Maneuver Without Reversing



U-Turn At Same level



U-Turn Different level

- ✓ **Conv. Roads:** Same + Different
- ✓ **Motorway/ Dual:**
Different level Through Exits

PROHIBITED:

- ✗ No Visibility
- ✗ Level Crossings and its Vicinity
- ✗ With Tunnel Signage
- ✗ Where Overtaking prohibited
- ✗ At Pedestrian Crossings

Shahid Raja

Immobilization

Voluntarily OR Involuntarily

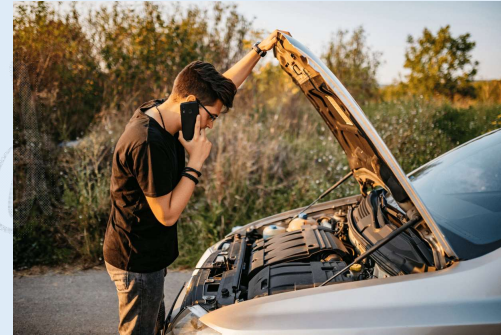


Stopping –
Less 2 Mins



Parking –
Driver Abandon

Detention/ Arrest Involuntary



Shahid Raja

Park/ Stop on (Road Types)

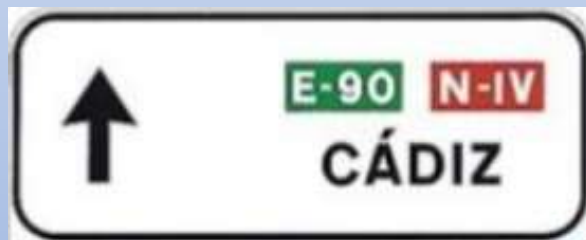


MOTORWAY

Designated Places

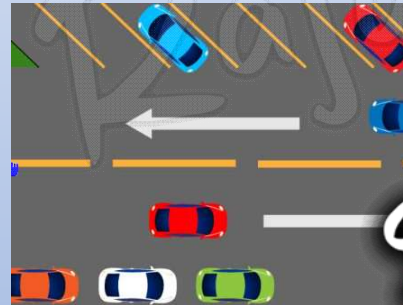
Conv. Roads

1. Off The roadway
2. Shoulder if passable
3. On the Right



URBAN

1. Angled
2. Battery



URBAN

1. Stop/ Park if no Signs
2. 2 Way: On Right
3. 1 Way: On Both Sides



Shahid Raja



Stop/ Park Prohibited

- ✗ Intersect
- ✗ Bus Lane

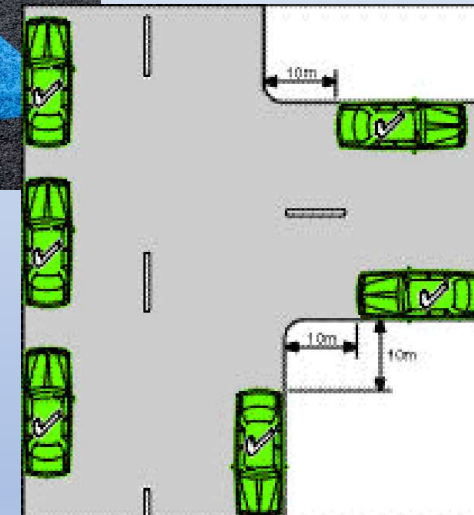


- ✗ Pedestrian/ Cyclist Crossings
- ✗ Disabled Areas/ Reserved



- ✗ Double Park- 3m, less 2 mins
- ✗ Medians, Islands

Shahid Raja





Parking Prohibited

- ✗ Limited Timed Zone (Without Ticket)
- ✗ Pavement/ Sidewalk/ Garage
- ✗ Double Row Parking
- ✗ Loading/ Unloading



Shahid Raja

Parking Rules

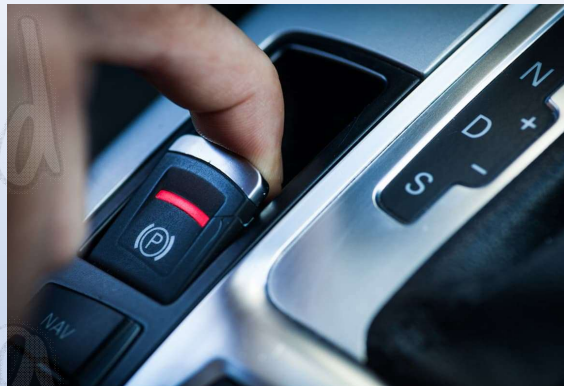
✓ Turn off Engine + Lock Doors

✓ Parking Brake

✓ Uphill – 1st Gear

✓ Downhill – Reverse Gear

✓ With trailer, use Chokes use Kerb



Shahid Raja

In Emergency Situations

- ✓ V-16 Light, Use Warning Triangles
- ✓ 50 m – 100 M visibility
- ✓ Hazard lights day/ Night
- ✓ Reflective vest going out
- ✓ Abnormally Slow on motorway, leave





Reversing Forbidden/ Allowed

General Rule

- ✗ Forbidden to travel in reverse Unless
- ✗ Can't go forward
- ✗ Can't change direction
- ✗ Can't Reverse on Motorways, D. Car

- ✓ Stopping
- ✓ Parking
- ✓ Incorporation to traffic
- ✓ Travel not more than 15 m



Shahid Raja